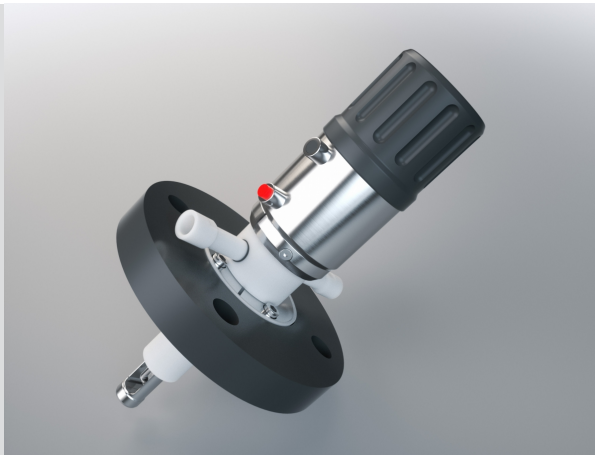


EXtract 820M plastics



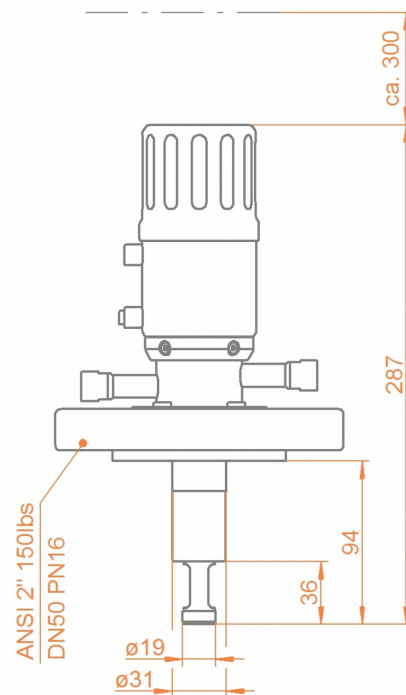
- » Robust design, integrated scraper
- » Automatic locking system with indicators for measurement- and service position
- » Automatic safety lock while sensor is removed
- » Safe handling under higher process pressure due to unique rotary drive
- » PP, PVDF or PEEK available
- » Usable in ATEX-areas
- » High stability protection cage in Alloy for option PVDF Immersion length up to 94mm

EXtract 820M is manually operated retractable probe housing made of plastics for installation of Ø12-225mm sensors on tanks or pipelines with an unique rotary drive unit.

Specifications

Process pressure:	0...10 bar
Process temperature:	-10...140 °C
Ambient temperature:	-10...70 °C
Immersion length:	up to 94 mm
Sensors:	225 mm Ø12 PG13.5
Materials:	PP, PVDF/Alloy C22, PEEK
Sealings:	EPDM, FPM (Viton), FFKM (Kalrez)
Process connection:	Flange DN50 PN16 / ANSI 2" 150lbs, MNPT 1 1/4"
Cleaning ports:	G1/8", G1/4", FNPT1/4"
Drive unit:	manual rotary drive unit
Limit switches:	optional electrical NAMUR-switches

Dimensions



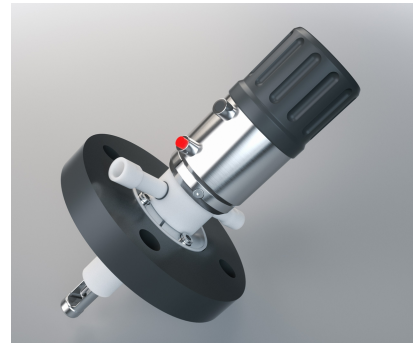
EXtract 820M plastics



Alloy protective cage and sensor in measuring position



Unlocking pins and position indicators on manual drive unit



Retractable probe housing EXtract 820M

Order code

Code	Material (wetted parts)	Delivery time
PP	PP	2 Weeks
PVDF	PVDF	2 Weeks
PEEK	PEEK	2 Weeks
Code	Sealing material (wetted sealings)	Delivery time
EPD	EPDM/FDA/USP VI	2 Weeks
FPM	FPM (Viton)	2 Weeks
FKM	FFKM (Kalrez)	3 Weeks
Code	Sensor type	Delivery time
225	225mm PG 13,5 gel-filled	2 Weeks
280	280mm PG 13,5 liquid filled	2 Weeks
Code	Process connection	Delivery time
D50	Flange DN50 PN16	2 Weeks
A20	Flange ANSI 2" 150lbs	2 Weeks
N14	NPT M 1 1/4"	2 Weeks
Code	Cleaning connection	Delivery time
G18	G 1/8" female thread	2 Weeks
G14	G 1/4" female thread	2 Weeks
N14	1/4" NPT female thread	2 Weeks
Code	Position switch	Delivery time
00	without	2 Weeks