

EXtract 810 stainless steel



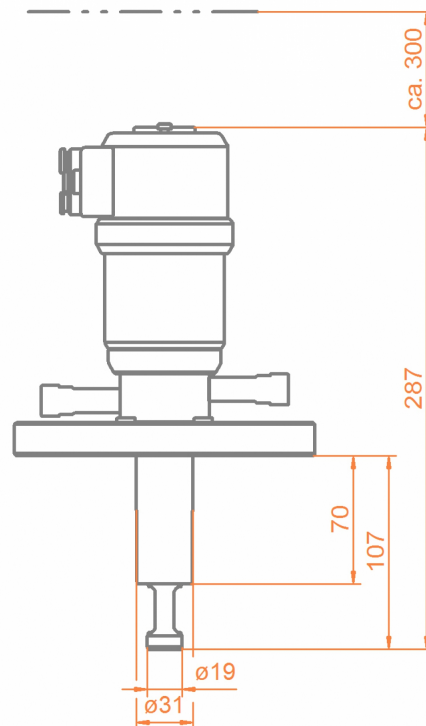
- » Robust design, integrated scraper
- » Extension of sensor-lifetime and reducing of maintenance efforts
- » Automatic safety lock while sensor is removed
- » Plug and play installation, colour- and size-coded connection system
- » Integrated limit switches
- » Usable in ATEX-areas
- » Immersion length up to 107mm

EXtract 810 is a pneumatically operated retractable probe housing made of stainless steel or Alloy C22 for installation of Ø12-225mm sensors on tanks or pipelines for fully automated sensor treatment.

Specifications

| | |
|----------------------|---|
| Process pressure: | 0...16 bar |
| Process temperature: | -10...140 °C |
| Ambient temperature: | -10...70 °C |
| Immersion length: | up to 107 mm |
| Sensors: | 225 mm Ø12 PG13.5 |
| Materials: | stainless steel 1.4404 /316L, Alloy C22 (2.4602) |
| Sealings: | EPDM, FPM (Viton), FFKM (Kalrez) |
| Process connection: | Flansch DN32 / DN40 / DN50 / ANSI 1 ¼" / ANSI 1 ½" / ANSI 2", MNPT 1 ¼", TriClamp 1-1.5", TriClamp 2" |
| Cleaning ports: | G1/8", G1/4", FNPT1/4" |
| Operating power: | compressed air 4...6 bar |
| Limit switches: | pneumatic, integrated |

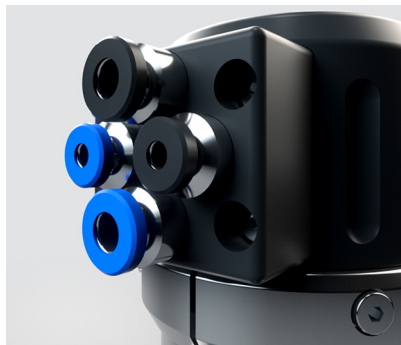
Dimensions



EXtract 810 stainless steel



Protecting cage EXtract in measuring position



Connection board EXtract - pneumatic connections



EXconnect connected to retractable probe housing

Order code

| Code | Material (wetted parts) | Delivery time |
|------|-------------------------------|---------------|
| 4404 | Stainless steel 1.4404 / 316L | 2 Weeks |
| HC22 | Alloy C22 2.4602 | 4 Weeks |

| Code | Sealing material (wetted sealings) | Delivery time |
|------|------------------------------------|---------------|
| EPD | EPDM/FDA/USP VI | 2 Weeks |
| FPM | FPM (Viton) | 2 Weeks |
| FKM | FFKM (Kalrez) | 3 Weeks |

| Code | Sensor type | Delivery time |
|------|-----------------------------|---------------|
| 225 | 225mm PG 13,5 gel-filled | 2 Weeks |
| 280 | 280mm PG 13,5 liquid filled | 2 Weeks |

| Code | Process connection | Delivery time |
|------|------------------------------|---------------|
| D32 | Flange DN32 PN16 | 2 Weeks |
| D40 | Flange DN40 PN16 | 2 Weeks |
| D50 | Flange DN50 PN16 | 2 Weeks |
| A14 | Flange ANSI 1 1/4" 150lbs | 2 Weeks |
| A12 | Flange ANSI 1 1/2" 150lbs | 2 Weeks |
| A20 | Flange ANSI 2" 150lbs | 2 Weeks |
| N14 | NPT M 1 1/4" | 2 Weeks |
| T15 | TriClamp 1-1,5" (OD Ø50.5mm) | 2 Weeks |
| T20 | TriClamp 2.0 (OD Ø64mm) | 2 Weeks |

| Code | Cleaning connection | Delivery time |
|------|------------------------|---------------|
| G18 | G 1/8" female thread | 2 Weeks |
| G14 | G 1/4" female thread | 2 Weeks |
| N14 | 1/4" NPT female thread | 2 Weeks |

| Code | Position switch | Delivery time |
|------|-----------------|---------------|
| PN | pneumatic | 2 Weeks |