

Blackbody Model 988

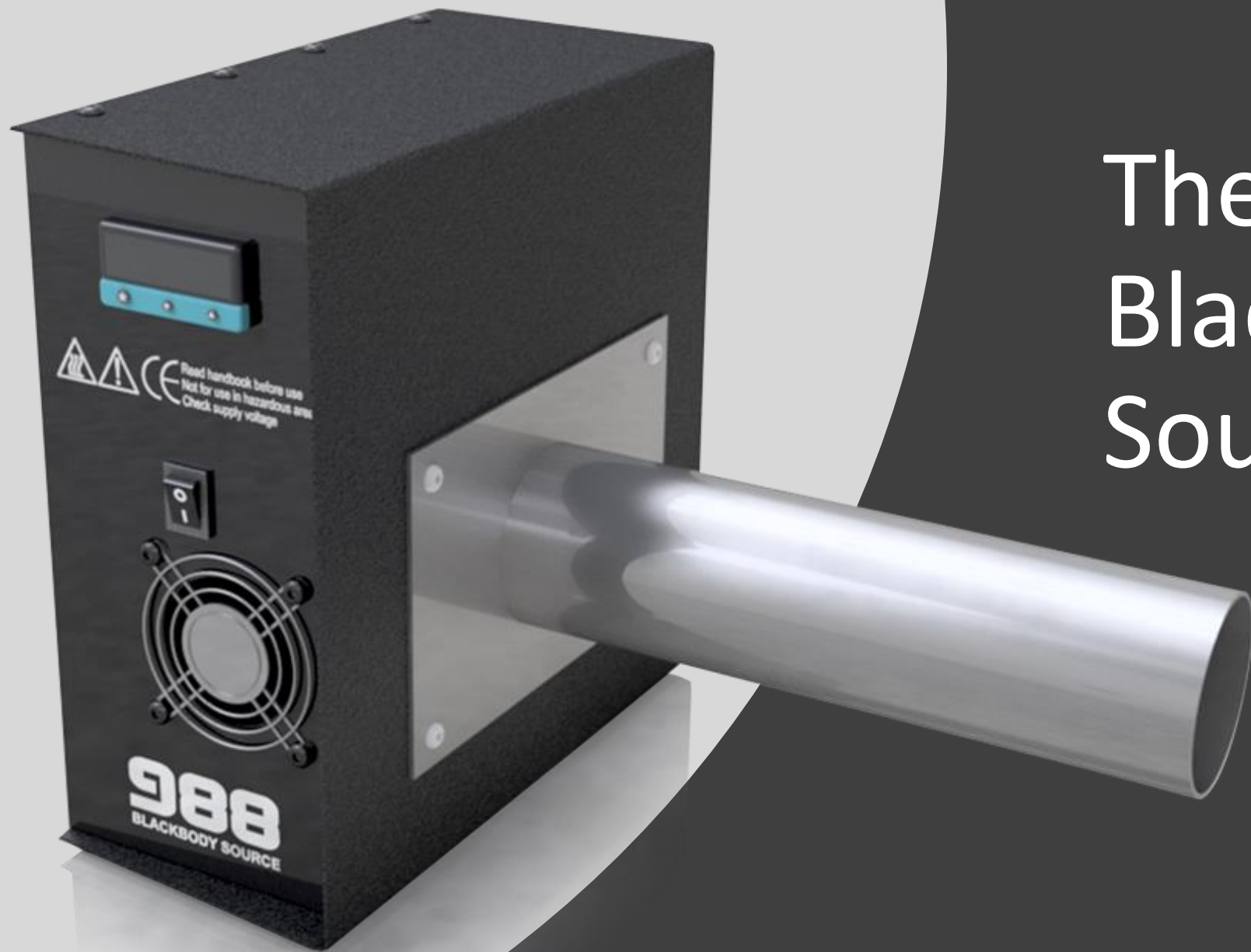


ISOTECH 40 years
1980-2020

LSOTECH

A world leader in temperature metrology
Celebrating 40 years in business 1980 - 2020
Holds Queens Award for Enterprise in the
Innovation Category

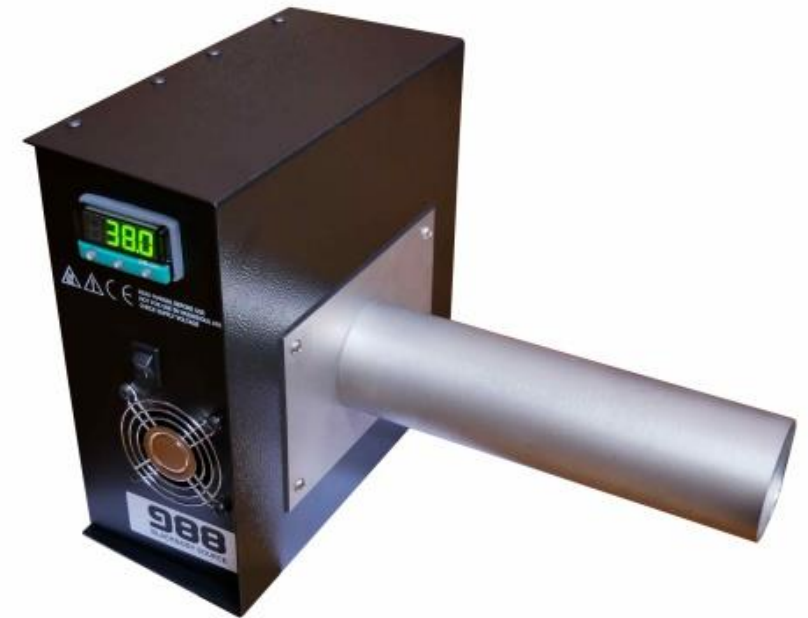




The Isotech Blackbody Source 988

First introduced 15 years ago to assist in relation to the SARS outbreak

Blackbody calibrators are used to increase the accuracy of non-contact fever detection systems



Now it is being used in relation to coronavirus

COVID-19 :Airport Fever Detection System



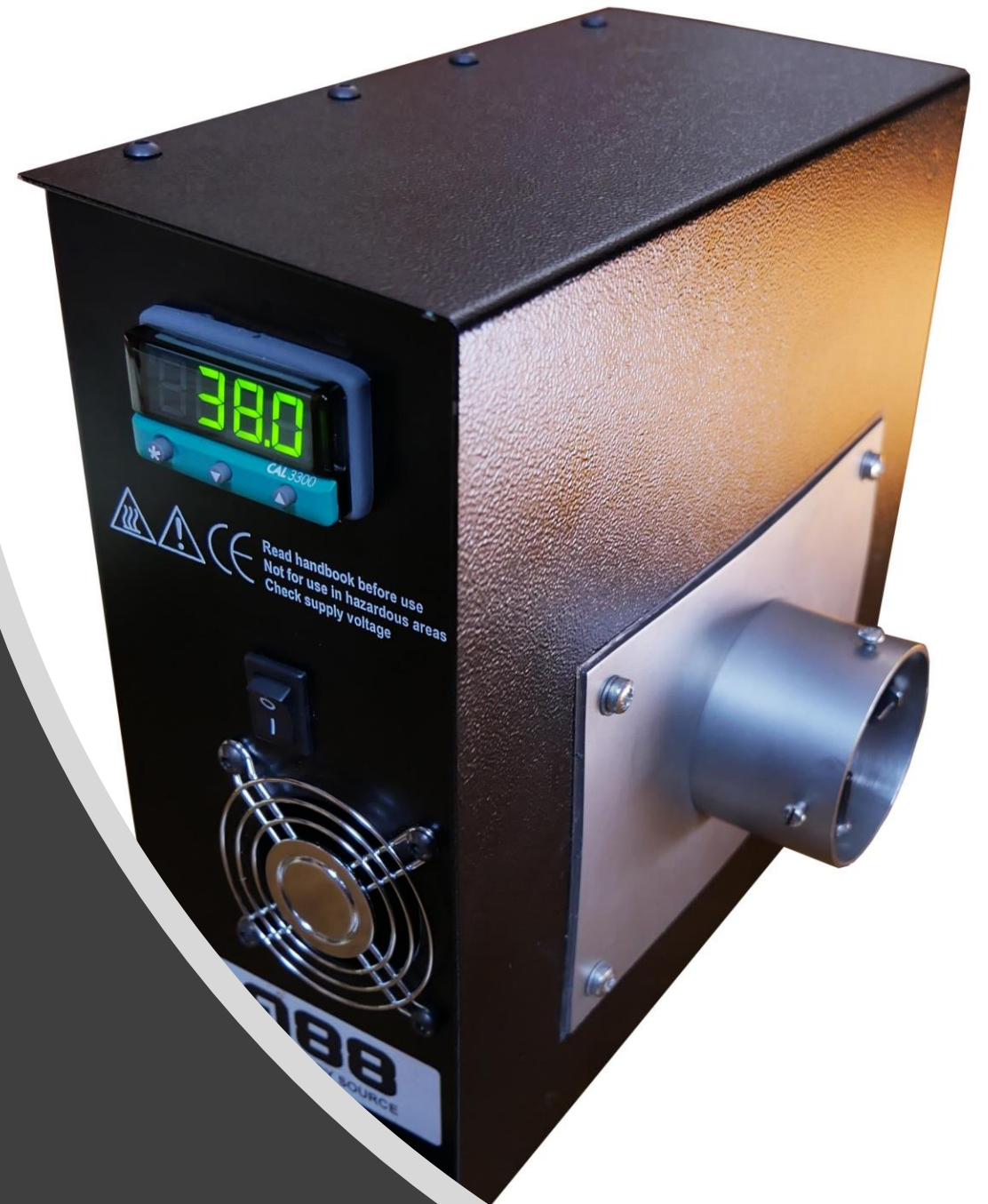
The model 988 can also be used to check non-contact medical thermometers

The S version has 40mm tube with a guide to fix the position of the thermometer relative to the heat source

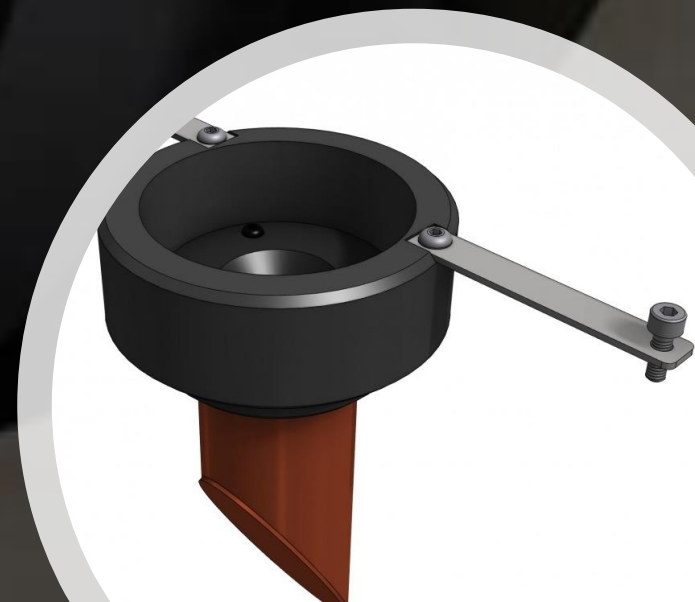
There are options to customize to suit different thermometer types



The Model 988 meets
the demand for a simple
cost-effective blackbody



Isotech also have
larger blackbody
sources for the
laboratory



The 988 has both heating and active cooling to span the temperature range 20°C to 45°C

An internal solid-state thermoelectric heat pump allows the unit to operate below ambient temperature

It allows the 988 to maintain body temperature in high ambient temperatures – a benefit over heat only blackbody sources



During development, evaluation showed that fitting the extension tube gives better uniformity and less sensitivity to air movement / drafts

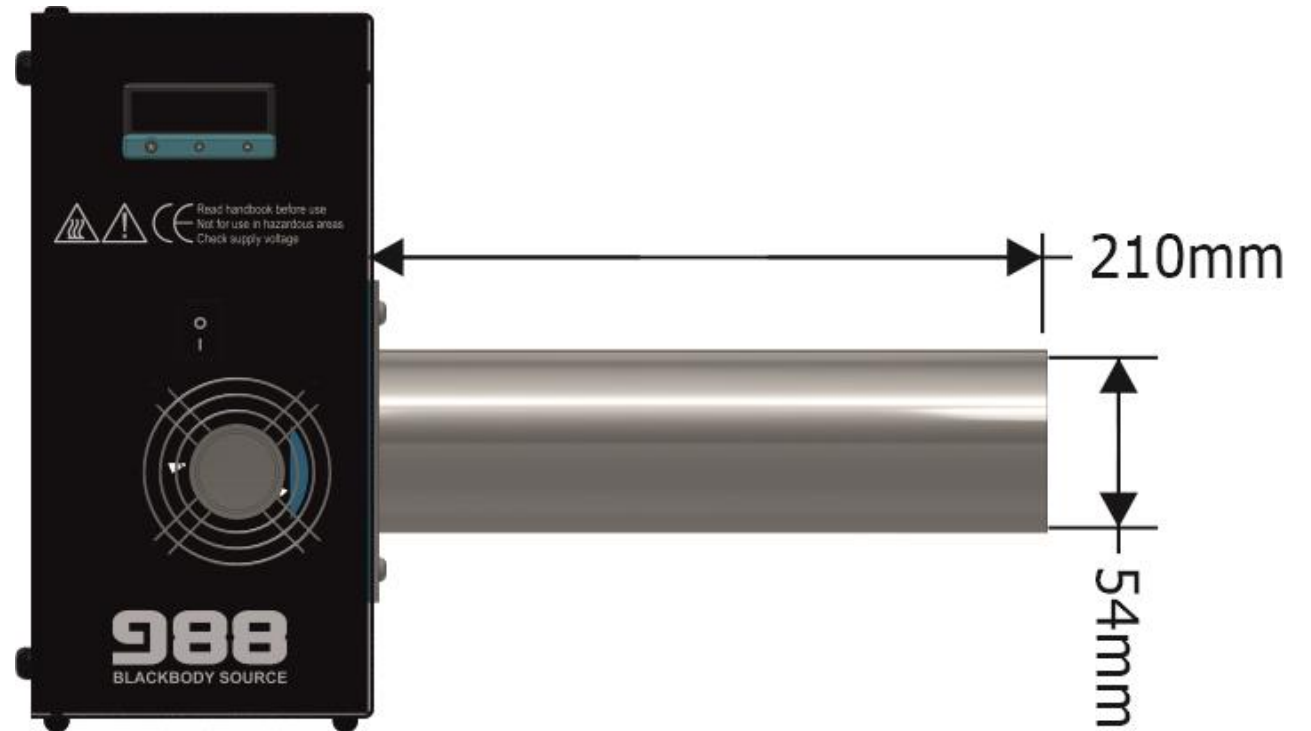


The tube can be removed

There is also a shorter version of the 988 – the 988S



988S

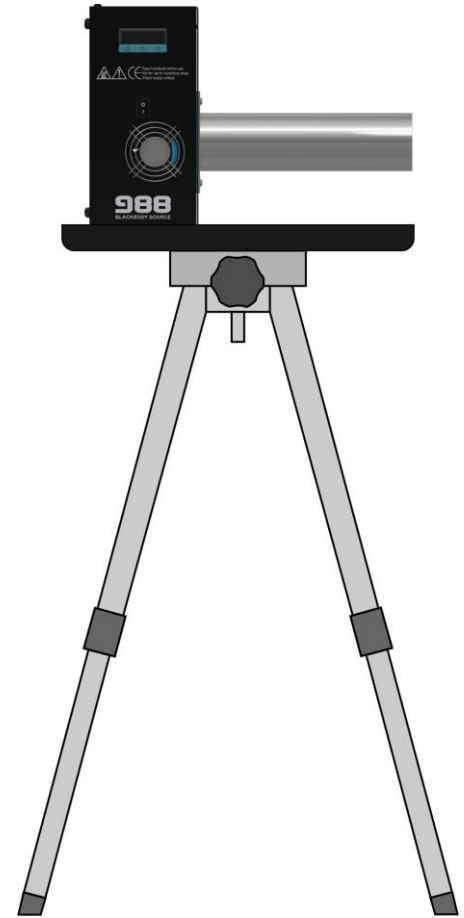


988

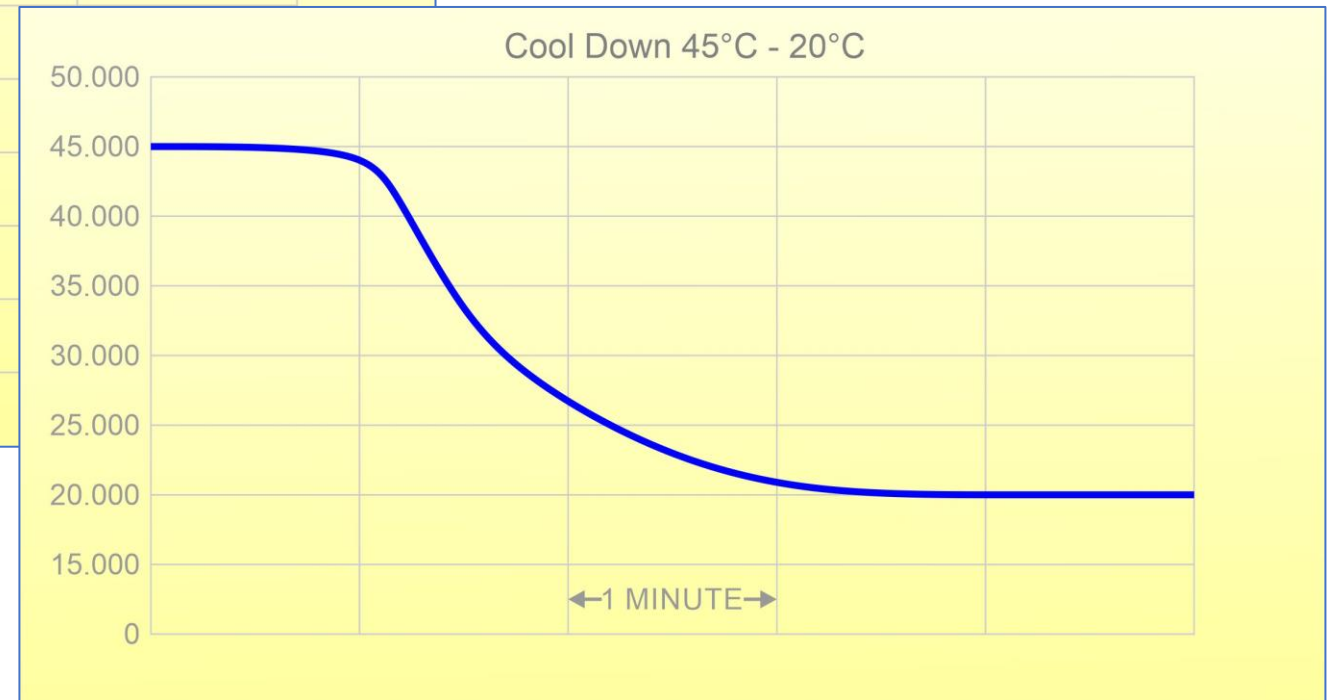
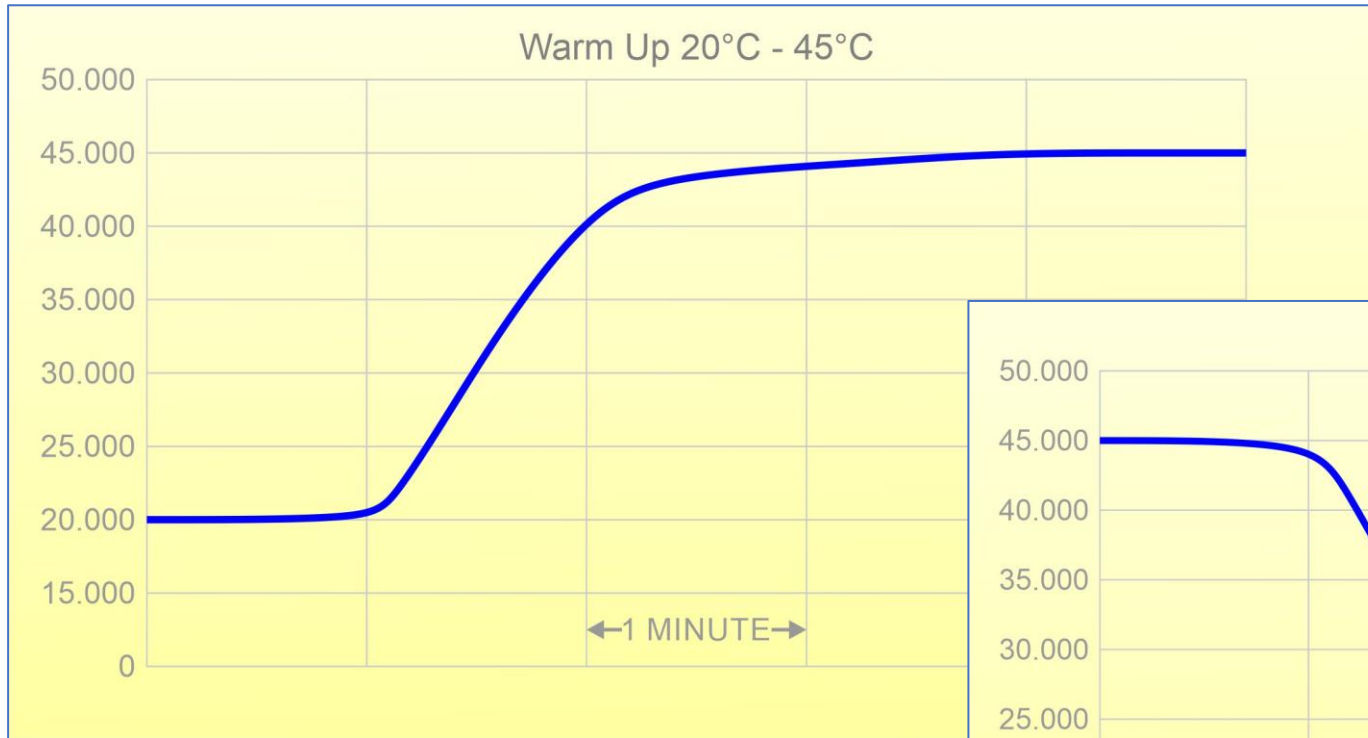
The unit can be used vertically
as well as horizontally

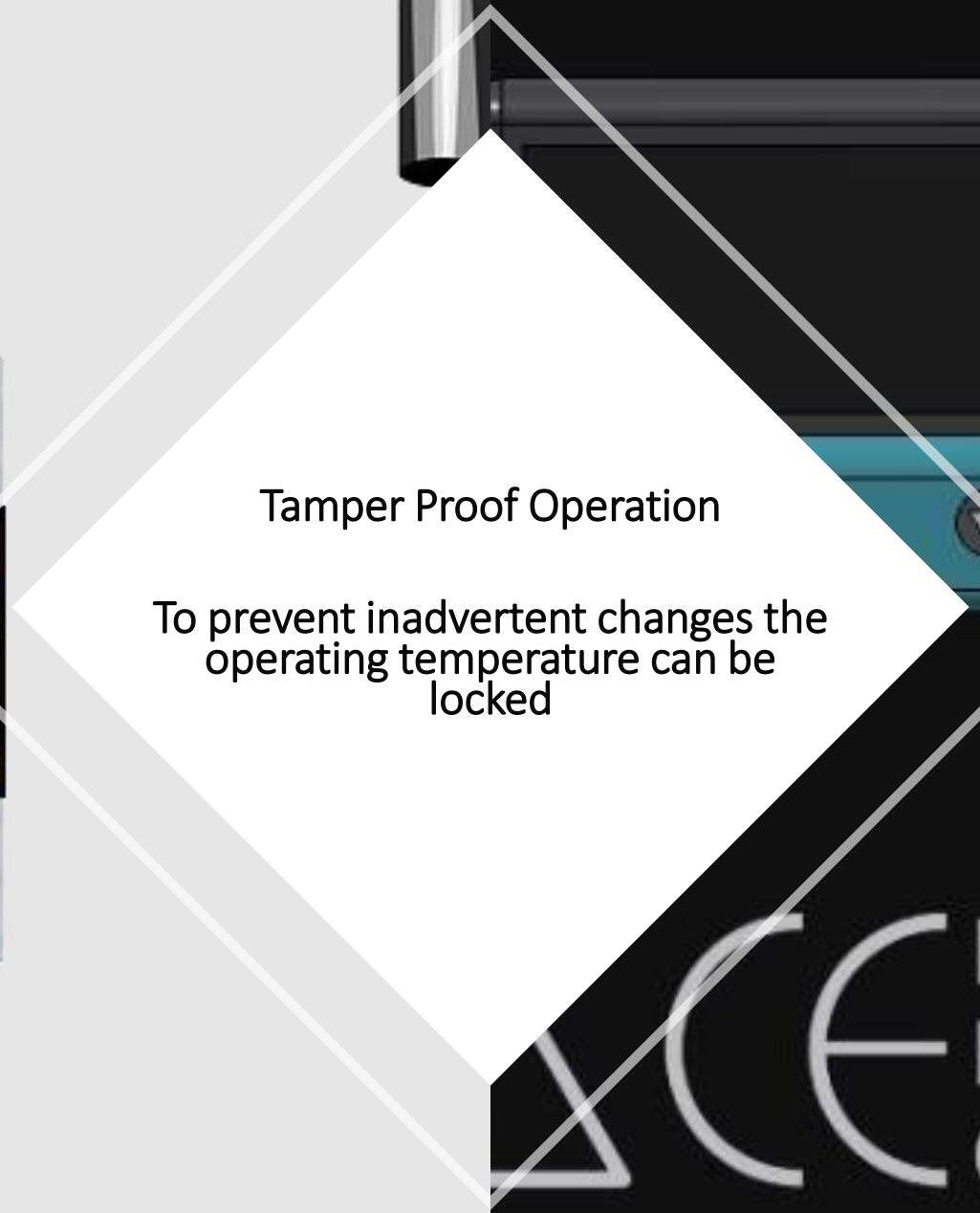
It is easy to mount

Stand Not Included



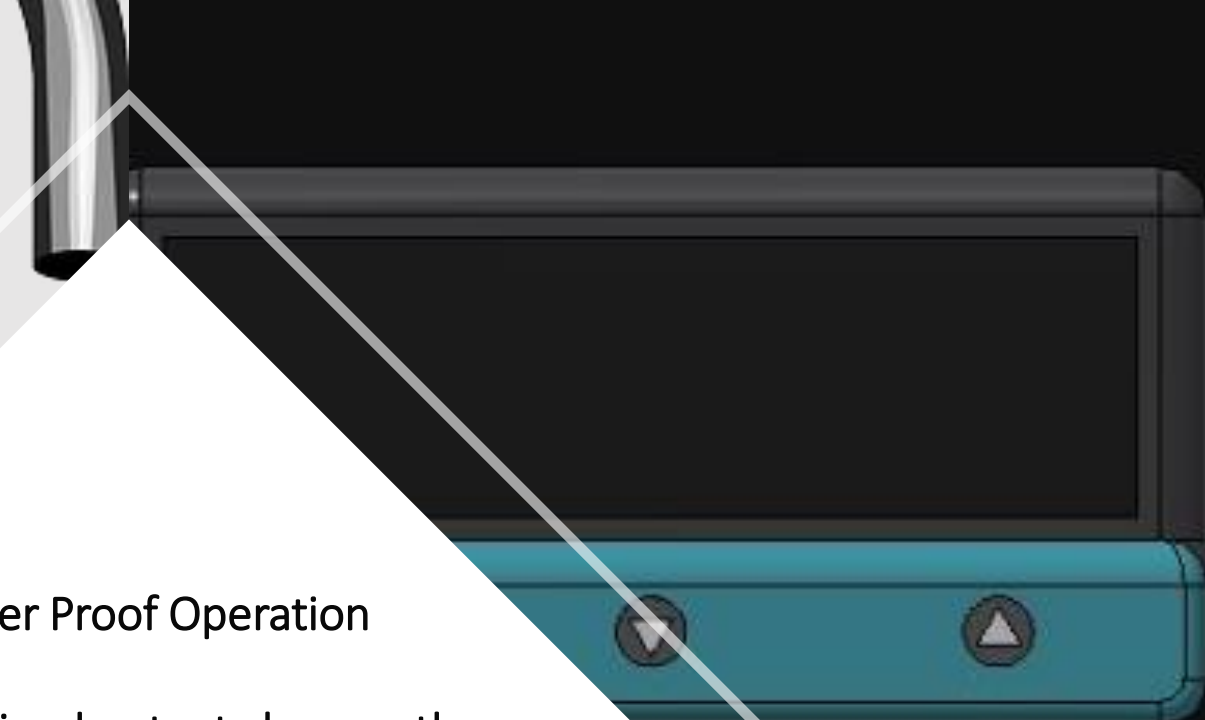
Fast response to achieve the set temperature





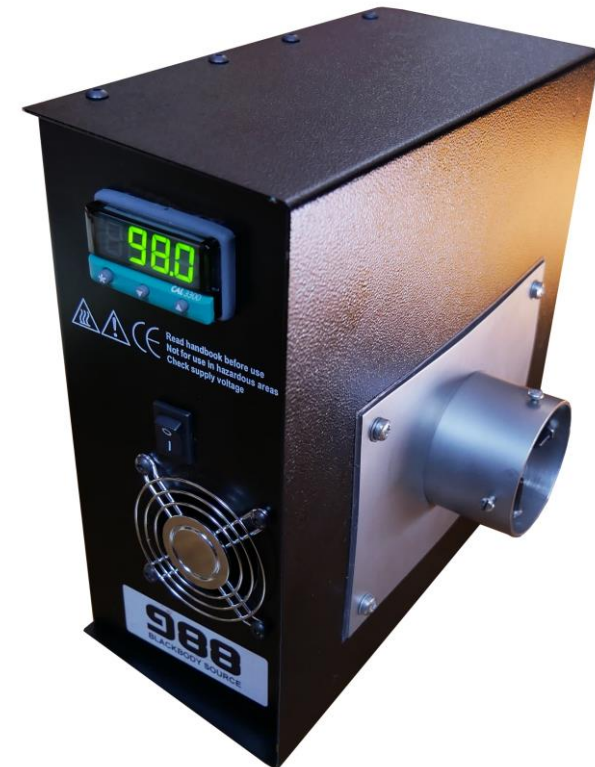
Tamper Proof Operation

To prevent inadvertent changes the
operating temperature can be
locked



Read handbook before
Not for use in hazardous
Check supply voltage

Celsius operation ($^{\circ}\text{C}$) is standard, the units can be switched to Fahrenheit ($^{\circ}\text{F}$)





ISOTECH

World Leader in Temperature Metrology